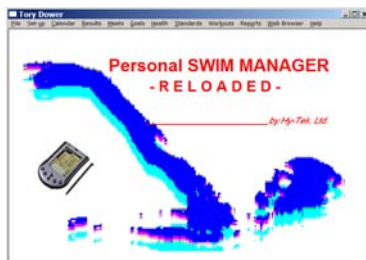




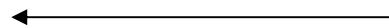
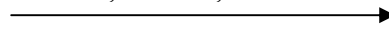
Personal SWIM MANAGER-R Mobile

Overview

Personal SWIM MANAGER – Reloaded Mobile (PSM-R Mobile) is designed to display and sort administrative and performance information directly on a PDA running the **Palm OS**. Administrative information about your family's swimmers (up to four) and their best time in every event can be exported to **PSM-R Mobile** from Hy-Tek's **Personal SWIM MANAGER for Windows** using the hot sync feature of your Palm OS. Meet Entries can also be downloaded to **PSM-R Mobile** so that the swimmer or parent can review meet entries on the deck for any event and then use **PSM-R Mobile's** powerful **Timer** to time an event and store the results, including splits, to be later imported back to the **PSM-R for Windows** Database!



Athletes, Admin. Info, Best Times, Entries, & Records.



Meet Results and Splits



System Requirements

Currently, **PSM-R Mobile** is available for the *Palm OS*[™] **ONLY**. The Pocket PC version is scheduled for release in the 4th quarter of 2003. **PSM-R Mobile** requires the Palm OS Release 3.2 or later and at least 2MB of Memory.

Installing PSM-R Mobile

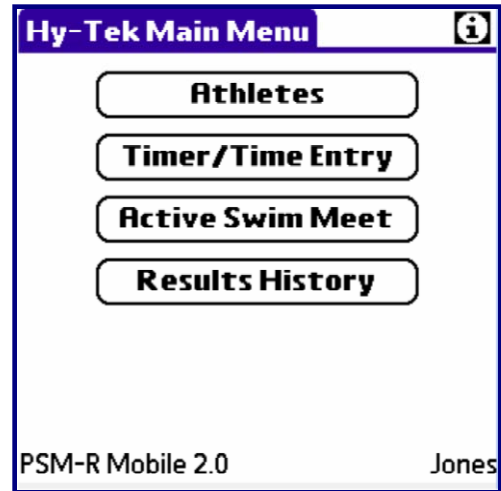
From your Windows desktop, start **PSM-R for Windows** and then from the Main Menu bar, click on **File / Install PSM-R Mobile** and follow the prompts. After the **PSM-R Mobile** software has been installed on your Windows desktop, press your Palm OS device's hot sync button to load the **PSM-R Mobile** software to your Palm OS device.

Copyright © 2003 by Sports-Tek Software, All Rights reserved.
 Sales Office Toll Free: 866.456.5111
 Support: psm@hy-tek.com

Main Menu

Each of these menu choices will be discussed in the following sections. Click on the "i" in the top right corner for information and Help for **PSM-R Mobile**. From this **Info** screen, click on the **Hy-Tek** button to show the Hy-Tek Sales Office telephone number and Tech Support email address.

Note: The **Active Swim Meet** is the meet that contains the meet entries (if any) downloaded from **PSM-R for Windows** as well as meet results entered using the **PSM-R Mobile Timer**. The **Results History** contains meet results you downloaded from **PSM-R for Windows**.



Athletes

Athlete Browser

From the **Athlete Browser**, choose from an alphabetical list of up to four Family Swimmers. If you have hot synced only one swimmer from **PSM-R for Windows**, then that swimmer will automatically be displayed.



Athlete Info

After you have selected the swimmer that you want, click on his/her name and **PSM-R Mobile** will display the **Athlete Info** screen.

Browser – Takes you back to the Swimmer list.

Menu – Takes you back to the Main Menu.



Contact – All of this information comes directly from the data that was entered into the **PSM-R for Windows** Database.

Contact	Allen, Samantha
Name	Raymond and Jan Allen
Address	53 w. Hampstead St.
City	Caswell
State	NY
Zip	12890
Day Phone	976-3324
Evening	
E-Mail	rjsallen@aol.com
<input type="button" value="Back"/>	

Medical – Doctor contact and other medical information about each swimmer.

Medical	Brindle, Meredith
Doctor Name	Dr Robert Thompson
Phone	233-456-8711
Emerg Name	Mrs. Nacny Brindle
Phone	233-456-7655
Med Info	None
Medications	None
<input type="button" value="Back"/>	

Best Times – Each Swimmer's Best Times in each event is included with the date and meet of that swim. Select a time and click on the **Splits** button to see both the running and lap splits.

Best Times	Chesson, Chris		
Stroke	Dist	Time	Date
Free	50	27.25 Y	12/14/200
Free	100	58.62 Y	12/14/200
Free	200	2:13.21 Y	12/2/2000
Free	500	6:12.86 Y	1/6/2001
Back	100	1:11.61 Y	2/4/2001
Breast	50	37.42 Y	1/14/2001
Fly	100	1:19.20 Y	1/6/2001
Meet STSL-EFA-11 & Over			
<input type="button" value="Back"/>		<input type="button" value="Splits"/>	

Results – All the meet results for each swimmer based on what meets were exported from the **PSM-R for Windows** Database. Results from up to five selected meets can be exported to **PSM-R Mobile**.

You can filter this display by **Course**, **Stroke**, and **Distance**. Select a particular result and **PSM-R Mobile** will display the meet name, place and points. Click on the **Splits** button to show splits for the event.

Results	MUNSON, ELIZABETH		
Stroke	▼	<input checked="" type="checkbox"/> All	
Distance	▼	<input checked="" type="checkbox"/> All	
Course	▼ Yards		
Stroke	Dist	Time	Date
Free	50	30.24	2/4/2001
Free	50	30.91	1/28/2001
Free	100	1:08.55	2/4/2001
Free	100	1:10.28	1/28/2001
Free	200	2:29.59	1/20/200
Meet YMCA 2001 District Champs			
Swim F	Place 3	Pts 16	
<input type="button" value="Back"/>		<input type="button" value="Splits"/>	

Timer / Time Entry

When you click on **Timer/Time Entry** from the Main Menu, **PSM-R Mobile** will check to see if you have downloaded any **meet entries** from **PSM-R for Windows**. If you have not, then you will be routed directly to the **Timer Swim Event Setup** screen below to pick the stroke, distance, and swimmer to time. But if you have hot synced meet entries from your **PSM-R for Windows** database, then **PSM-R Mobile** will route you to the screen on the right so that you can choose what events/swimmer you wish to time, either from your entry list sorted by event number or from your alphabetically sorted swimmer list. Please refer to the **Entries – Event** and **Entries – Swimmer** sections under **Active Swim Meet** discussed later in this document. When you use the Active Swim Meet entries, **PSM-R Mobile** will fill in the stroke, distance, and swimmer before routing you to the **Swim Event Setup** screen below. Or, you can click on **An Open Event**, and **PSM-R Mobile** will route directly to the **Swim Event Setup** screen to pick the stroke, distance, and swimmer to time.

Use Timer/Time Entry for:

Meet Entries obtained from PSM-R Mobile:
You may choose an entry by using one of the two search methods below:

Entries - Event

Entries - Swimmer

Or:

An Open Event

Menu

Swim Event Setup

Before starting the Timer, you must specify the Stroke, Distance, and the Swimmer that you wish to time. If you hot synced meet entries from your **PSM-R for Windows** database and then selected an event and swimmer from the list of entries, then **PSM-R Mobile** automatically fills in the Stroke, Distance, and Swimmer. **PSM-R Mobile** will default to your “last” **Swim** selection, Final, Prelim, or Semis.

Click on the **Split Setup** button and **PSM-R Mobile** will offer you three choices:

- Record each of the splits
- Record the Near End splits
- Record only the Final Time

Swim Event Setup

Event Details
Meet Sectional Championships
Stroke ▼ Free Dist ▼ 100
Swim ▼ Final Age Open

Split Setup Record all splits

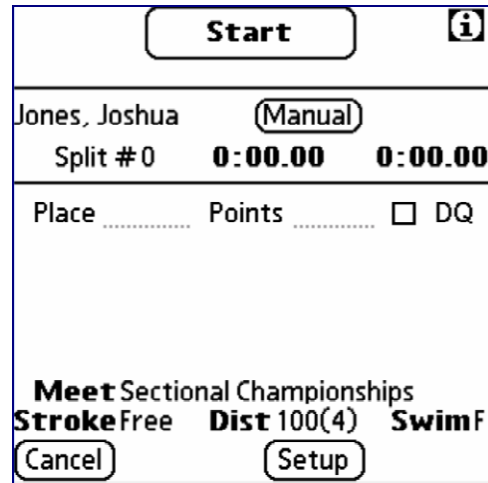
Swimmer
(x) #1 ▼ Jones, Kevin

OK Split Setup Cancel

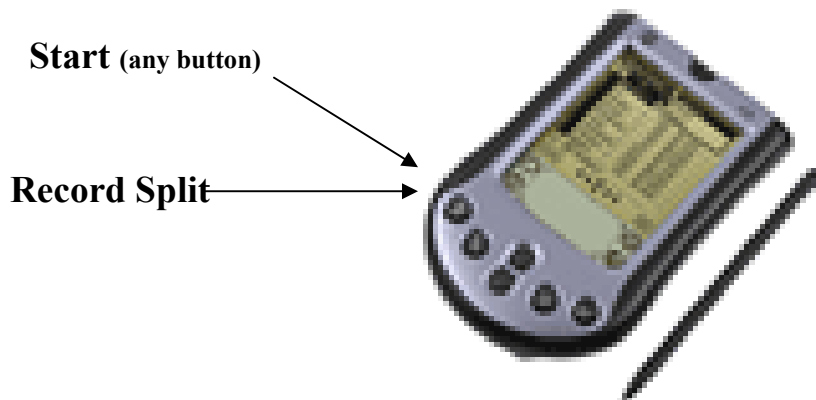
For example, if you chose a 200 IM in a Yard pool and “Record each of the splits”, **PSM-R Mobile** would set up the timer for 8 splits. If you chose “Near End splits”, **PSM-R Mobile** would set up the timer for 4 splits. If you choose “Record only the Final Time”, then no splits will be recorded and only the final time will be saved.

Using the Timer

Click the **OK** button and **PSM-R Mobile** will display the Timer screen. The name of the **Active Swim Meet**, the stroke and distance for the event, and the type of Swim (**Final**, **Prelim**, or **Semi**) are shown at the bottom of the screen. The number of splits will be included next to the distance – for example **Dist 100(4)** means you have chosen to record 4 splits. Click on the **Start** button and **PSM-R Mobile** will start the timer. Click on the **Split** button and/or the **Stop** button if you just want to stop timing the swimmer. **PSM-R Mobile** will automatically stop the timer based on the number of splits you have chosen in the **Split Setup** menu. Click on the **Reset** button to reset the timer back to Start.



You may also use the “buttons” on your PDA to time the race instead of your stylus. Press any of the four buttons to Start the race. Press the left most button to record splits.



After the race has been completed, **PSM-R Mobile** will offer a number of choices. To view the splits for a swimmer, click on the **Splits** button next to the swimmer's name. If you do not want to save the results for the swimmer, un-check the check box next to "Split" and then when you click on the Save button, **PSM-R Mobile** will NOT save that swimmer's results. You also have the option of entering Place and Points for the swimmer.

0:59.47		
Jones, Joshua	(Manual)	(Splits)
<input checked="" type="checkbox"/> Split # 4	0:15.39	0:59.47
Place 2.....	Points 5.....	<input type="checkbox"/> DQ
Meet Sectional Championships		
Stroke Free	Dist 100(4)	Swim F
(Cancel)	(Reset)	(Save)

Click on the **Manual** button from the Timer screen for the swimmer and **PSM-R Mobile** will let you enter your splits manually. Enter splits using either the **Running Split** or the **Lap Splits** method. For example, enter "12345" and click on the check mark ✓ and **PSM-R Mobile** will automatically format the time at "1:23.45".

Manual Entry	
Method of recording splits:	
<input checked="" type="checkbox"/> Running Split <input type="checkbox"/> Lap splits	
Split	Time
1	16.18
2	30.67
3	45.28
4	58.30
Edit Split:	
1
	[MM]SSHH
(Timer)	

Click on the **Save** button and **PSM-R Mobile** will save the results for the Active Swim Meet.

Active Swim Meet

Click on **Active Swim Meet** from the Main Menu and **PSM-R Mobile** will display a number of choices that will be discussed in this section.

Please note that there is only **ONE Active Swim Meet** at any one time. Once you Save the Active Swim Meet, those meet results will be stored as part of the **Results History**. You can use the **Timer** and/or enter meet results **ONLY for the Active Swim Meet**. And **PSM-R for Windows** imports meet results **ONLY** from the Active Swim Meet.

Active Swim Meet
 Name NESCAC Women's Swimming/Di
 Date 2/21/2003
 Course Yards SCM LCM
 Results - Event
 Results - Swimmer
 Entries - Event
 Entries - Swimmer
 Save/New Meet Menu

Results – Event

This selection shows you a list of results from the **Active Swim Meet** for a specific Stroke and Distance.

Results – Swimmer

This selection shows you a list of results from the **Active Swim Meet** for any Swimmer.

Save/New Meet

Click on the **Save/New Meet** to not only save the current Active Swim Meet but also to set up a new meet. Note that if you save the Active Swim Meet as Results History, then **any results that you have entered into this meet using the Timer / Time Entry screen will NOT be imported by PSM-R for Windows.**

Entries – Event

This screen lists the events for the Active Swim Meet. Generally, this is the meet that has been exported from the **PSM-R for Windows** Database that contains the entry declarations. Click on an event or click on **View Swimmers** to see a list of swimmers that have been entered in that particular event. Highlight a Swimmer and click on the **Select** button so that when you click on the **Timer** button, **PSM-R Mobile** will automatically set that swimmer up on the Timer.

Entry Events				
Meet 2001 East Havelock YMCA				
#	Stroke	Distance	Age	Gen
1	IM	100	9-10	F
2	IM	100	9-10	M
3	IM	100	8&U	F
4	IM	100	8&U	M
5	Free	50	9-10	F
6	Free	50	9-10	M
7	Free	25	8&U	F
8	Free	25	8&U	M

Back View Swimmers Menu

Swimmer Entries - Event	
Meet Sectional Championships	
Event Num. 3	<input checked="" type="checkbox"/> Male
Stroke Back	<input type="checkbox"/> Female
Distance 50	Age Open
Swimmer	Entry Time
Jones, Joshua	33.68

Back Timer Meet

Entries – Swimmer

Pick a Swimmer from the pull-down list and **PSM-R Mobile** will list the events that the swimmer has been entered in based on what was exported from the **PSM-R for Windows** Database. Click on the **Timer** button and **PSM-R Mobile** will automatically set that swimmer and event up on the Timer screen.

Meet Entries - Swimmer			
Meet 2001 East Havelock YMCA			
#	Stroke	Dist	Entry Time
Swimmer ▾ Allen, Samantha			
31	Free	100	58.21
43	Breast	100	1:24.62
49	Fly	100	1:14.45

Back Timer

Results History

From the Main Menu, click on **Results History** and customize the Stroke, Distance, Gender, and even the Meet and **PSM-R Mobile** will list those results that have been exported from the **PSM-R for Windows** Database.

Results History - Swimmer			
Swimmer	▼ Jones, Joshua		
Stroke	▼	<input checked="" type="checkbox"/> All	
Distance	▼	<input checked="" type="checkbox"/> All	
Course	▼ Yards		
Stroke	Dist	Time	Date
Free	50	29.08	12/16/2002
Free	50	29.12	1/18/2003
Free	50	29.44	12/16/2002
Free	50	29.53	1/18/2003
Free	100	1:02.73	1/18/200 ↓
Meet 12/2002		SwimF	Pts 0 PI 1
Event		Show	Menu

Export Information from PSM-R for Windows to PSM-R Mobile

Start **PSM-R for Windows** and click on **File, Export**, then **PSM-R Mobile**. Make your menu selections and click on the **OK** button and then press the hot sync button on your PDA. For specific information about various export filters and options, click on **Help** then **Contents/Index** and key in "Export" and choose the PSM-R Mobile topic.

Import Results Back to PSM-R for Windows

Start **PSM-R for Windows** and click on **File** then **Import** then **PSM-R Mobile**. Press the hot sync button on your PDA then follow the menu prompts to import meet results and splits back to your **PSM-R for Windows** database. For specific information, click on **Help** then **Contents/Index** and key in "Import" and choose the PSM-R Mobile topic.

Table of Contents

PSM-R Mobile	1
Overview.....	1
System Requirements.....	1
Installing PSM-R Mobile	1
Athletes	2
Athlete Browser	2
Athlete Info	2
Best Times	3
Results.....	3
Timer / Time Entry	4
Swim Event Setup.....	4
Using the Timer	5
Active Swim Meet	7
Results – Event	7
Results – Swimmer	7
Save/New Meet.....	7
Entries – Event.....	8
Entries – Swimmer.....	8
Results History.....	9
Import Results Back to PSM-R for Windows	9